

SAPOS YUMI INO LUKLUK LONG WANPELA MAK:



DISPELA PLEN INO INAP KARIM KAIKAI

SAPOS YUMI INO POIN LONG WANPELA HAP TASOL:



DISPELA PLEN INO INAP KARIM KAIKAI

LUKLUK NA POIN LO WANPELA MAK



KIRAPIM NA STRONGIM GUTNIUS INSAIT LONG FEMILI NA STRONGIM SIOS



“THE AIM OF VISION 2030 IS TO REBUILD AND RESTORE THE CHURCH IN ALL ASPECTS. THE TASK OF RESTORING THE CHURCH MUST BEGIN FROM THE FAMILY UNITS BECAUSE FAMILIES ARE THE BASIC HOUSEHOLD OF GOD. THEREFORE THE FOCUS OF VISION 2030 IS ON FAMILY.”

Rt. Rev. Dr. Jack Urame (PhD)
Head Bishop – The Evangelical Lutheran Church of Papua New Guinea



1.ELCPNG I LUKIM EM YET OLSEM WANEM LONG YIA 2030?

Kirapim Na Strongim Gutnius Insait Long Femili Na Strongim Sios



VISION STATEMENT:

CREATING A HEALTHY CHURCH by SHARING THE FAITH And BUILDING THE CHURCH – FAMILY FOCUS

2.BILONG WANEM SIOS KAMAPIM STRETEGIK PLEN?

- Plen I olsem rot i soim yumi klia hap bilong walkabout igo kamap long Ples yumi laik I go long em.



Rot long Kinim Station – ELC Karkar Distrik

3.BAI YUMI MEKIM WANEM? LONG KAMAPIM KAIKAI BILONG DISPELA PLEN?

- Yumi Olgeta Igat Wok Long Kamapim Kaikai Bilong Dispela Plen; Insait Long Femili;Kongregesen, Paris ,Seket , Distrik, Na Nesenol Opis:
 - Pastor Na Evangelist
 - Sios Wokman Meri
 - Papa Na Mama
 - Oi Pikinini
 - Yangpela Man Na Meri
 - Olgeta Bilip Manmeri



BY 2030, ELC PNG :

- ◆ WILL BE MISSION DRIVEN
- ◆ FAMILIES WILL BE HEALTHY, EDUCATED & FINANCIALLY SECURED.
- ◆ REVIVED AND STRENGTHENED CHURCH STRUCTURES : CONGREGATIONS, PARISHES, CIRCUITS, DISTRICTS



EVANGELICAL LUTHERAN CHURCH
OF
PAPUA NEW GUINEA



SHARING THE FAITH - BUILDING THE CHURCH
Healthy Family, Healthy Church, Healthy Nation

“As for me and my house, we will serve the Lord”

Joshua 24:15b.

STRATEGIC PLAN
2021 - 2030

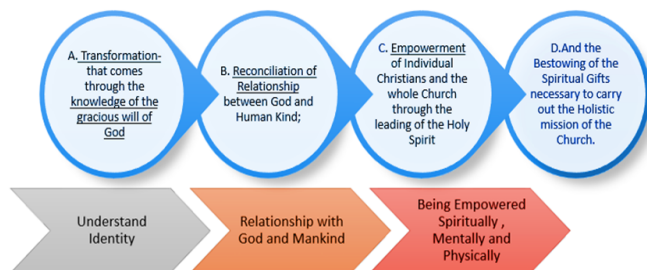
“FAMILY FOCUS”

Empower - Support - Build Lives

VISION : CREATING A HEALTHY CHURCH by SHARING THE FAITH AND BUILDING THE CHURCH. **“FAMILY FOCUS”**

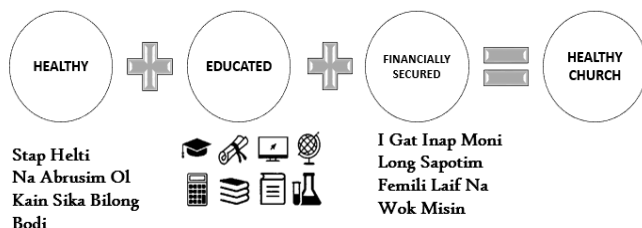
MISSION: Raising Healthy, Loving and Caring Families through the proclamation of the Gospel of Jesus Christ.

Our Mission is an on-going Process of total re-orientation of Life through:



SIOS BAI ISTAP STRONG NA WOK BILONG GUTNIUS I GO MOA YET TAIM:

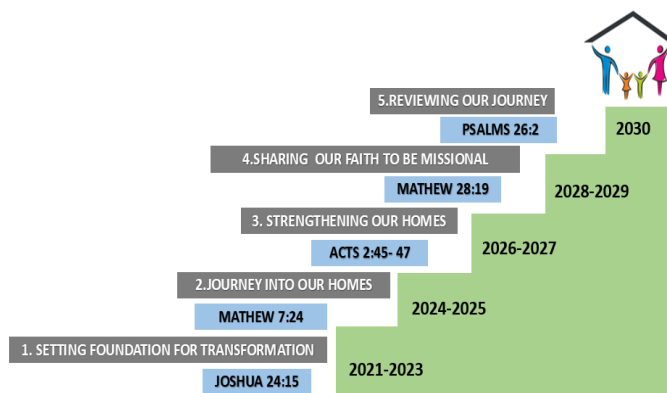
FEMILI I STAP:



CORE VALUES

- F** **FAITHFUL**
> We must be faithful to God and be truthful at all times
- A** **ACCOUNTABLE**
> We must always take responsibility of our words, actions and lives
- M** **MERCIFUL**
> We must be patient, kind and quick to forgive everyone
- I** **INSPIRE & INFLUENCE**
> We must encourage each other and promote good values
- L** **LOVE**
> We must Love God and others as we love ourselves
- Y** **YOUTHFUL**
> We must mentor our youth to become leaders of tomorrow

GOALS: FIVE GOALS



2021 – 2023 SETTING THE FOUNDATION FOR TRANSFORMATION

Planning & Capacity Building Program

2024 – 2025 JOURNEY INTO OUR HOMES

Roll out the programs at family level

2026 – 2027 STRENGTHENING OUR HOMES

Review , Improve and sustain programs and activities.

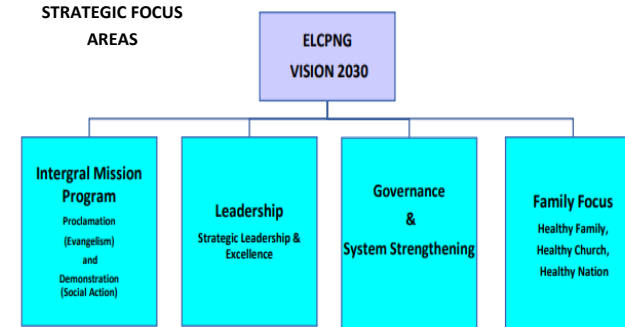
2028 – 2029 SHARING OUR FAITH TO BE MISSIONAL

Reaching out to Strategic Mission Focus Area

2030 REVIEWING OUR JOURNEY

Evaluation of Ten Year Journey

STRATEGIC FOCUS AREAS



POLICY GOAL	OVERALL OBJECTIVE
1 Governance and Administration	To improve Corporate Governance and accountability
2 Human Resource Management	Improve Human Resource Management Systems and processes to improve staff Performance Management
3 Planning and Management Systems	Improve basic program and budget planning to ensure wise use of scarce resources and coordination of activities to achieve desired outcomes
4 Asset Management and Distributions	Improve asset Management and distribution system that will sustain church programs and activities.
5 Service Delivery Partnership Agreement (Inclusive Partnership)	Establish Delivery Partnership Agreement with strategic stakeholders to improve ministerial and social service programs at national and district level

PROGRAM GOAL	OVERALL OBJECTIVE
1 Ministerial (Good News)	To encourage and foster Spiritual Renewal and deeper devotion to Christ
2 Lutheran Development	Improve social and economic livelihood of families
3 Education	Improve Quality of Education (Universal right to Education)
4 Health Services	Improve the Quality of Health Care for our people

How do we achieve these goals? By setting strategic and **SMART** goals for all 4 Departments

KEY RESULT AREAS (Example)

MINISTERIAL: Division of Evangelism : A. Gutnius:

OUTCOME #18: Establish Men’s Ministry Program focusing on developing a “father” by 2022

SOCIAL SERVICES: Division of LHS

OUTCOME #2: Prepare Maintenance Plan of rural health facilities by 2022 ;

Division of LDS

OUTCOME #1: Secure partnership in delivering Small Infrastructure Projects by November 2022.

BILONG WANEM LUKLUK LONG FEMILI?